



BMW 2002/2002 tii

114731

Dear BMW enthusiast,

In congratulating you on your new BMW, we trust you appreciate the qualities of the car you now own. The road-holding and performance of the car enable you to be courteous and careful in traffic, yet accelerate away from the crowd when conditions permit.

However, the power of your car only has real meaning if you handle it with confidence. Therefore, please take a little time to study the hand book, with its recommendations for trouble free driving pleasure.

Sincerely yours
BAYERISCHE MOTOREN WERKE
Aktiengesellschaft

Before you start —
Where is everything?



"Daddy said
I'm too young to understand —
those grown ups!"

Locks and closing doors 7

To unlock the doors, insert key 1 and turn towards the front of the car. To lock the doors, turn the key in the opposite direction. When unlocked, press the button beneath the handle to open the door. Fig. 4

To lock the doors from the inside, press down the safety knob; to open from the inside, first raise the safety knob, then pull up the handle beneath the armrest. Fig. 5

When the door is open the safety knob cannot be pressed down. This prevents the door from being locked accidentally.

The luggage compartment is locked and unlocked by key 2. Fig. 6

Do not forget to lock the luggage compartment with the key after closing the lid.



114735



114736

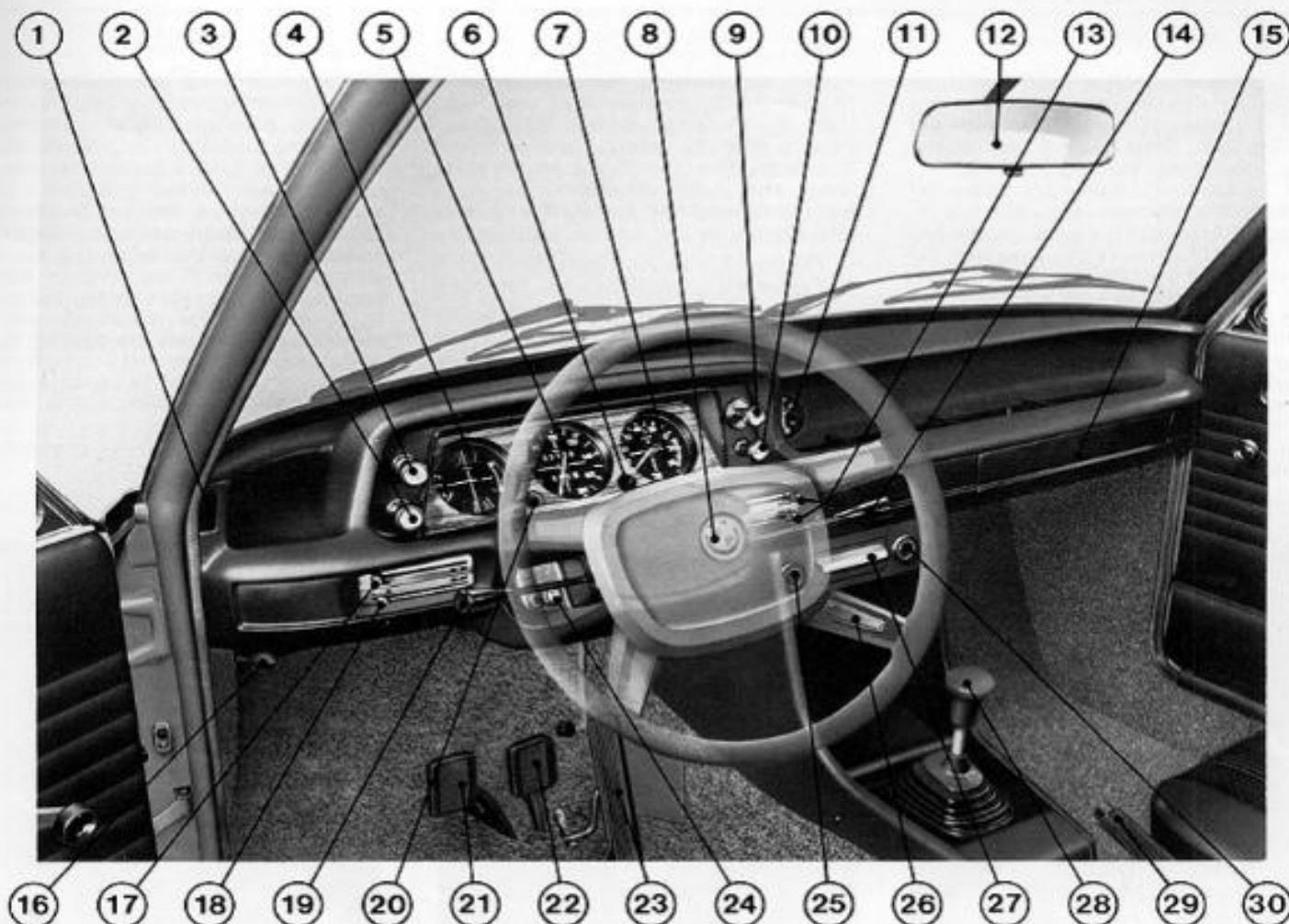


114737

Instruments and controls

Note: Number in square brackets [] indicates page on which description is to be found.

1. Air distributing vent for side window (left) [20]
2. Pull knob for fog lamp (optional) [14]
3. 2-position head and side light switch, with instrument panel illumination [10]
4. Combined instrument containing fuel gauge, coolant temperature gauge and warning lamps [15] for:
 - battery charge (red)
 - oil pressure (red)
 - turn indicators (green)
 - main beam (blue)
5. Speedometer with mileage recorder and trip recorder [13]
6. Trip recorder reset knob [13]
7. Revolution counter on BMW 2002 tii;
clock on BMW 1602/1802/2002/ [13]
8. Steering lock and ignition [10]
9. Combined cigar lighter and plug socket [19]
10. Pull knob for heated rear window (optional) [21]
11. Clock [13] (does not apply to BMW 1602/1802/2002)
12. Interior rear view mirror [15]
13. Heater temperature control lever and blower lever,
3-stage [20]
14. Screenwiper and screenwasher lever [11]
screenwasher lever [11]
15. Glove compartment [18]
16. Lever for engine compartment lock [12]
17. Air distributing lever for defroster vents [20]
18. Air distributing lever for footwells [20]
19. Lever for turn indicators, parking lights, headlight dip
and flasher [10]
20. Warning lamp (red) for fuel tank reserve, handbrake and
choke pull knob [13]
(latter does not apply to BMW 2002 Automatic and 2002 tii)
21. Clutch pedal [26]
22. Brake pedal [26]
23. Accelerator pedal [25]
24. Choke pull knob [24]
(does not apply to BMW 2002 Automatic and 2002 tii)
25. Hazard warning flasher switch [14]
26. Horn pushers [13]
27. Ashtray [19]
28. Gear lever [16] (BMW 1602/1802/2002/2002 tii),
selector lever [22] (BMW 2002 Automatic)
29. Handbrake [18]
30. Switch for rear fog light [14] (optional)



The **ignition and starter switch**, mounted on the right-hand side of the steering column housing, is combined with the steering lock. Insert key 1 only at the "Halt" position of the lock, Fig. 7

Turn the key to the right as far as the "o" position: the steering lock will be released with an audible click as the key is turned (if necessary the steering wheel should be moved slightly to assist). The steering is now unlocked, the radio and the electric steel sliding roof (optional extra) will operate if required. If the key is now turned further to the "Fahrt" (Drive) position, the ignition will be switched on, the battery charge (red) and oil pressure (red) telltales will be illuminated, and the fuel gauge will register.

7



114739

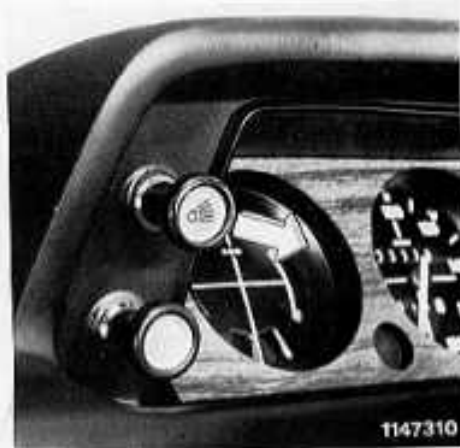
To lock the steering, turn the key back to the "Halt" position and withdraw. Move the steering wheel slightly if necessary until the steering lock is heard to engage. The ignition key can be withdrawn only in this position.

2-position headlamp and light switch (Fig. 8):

- Position 1 — parking lights
- Position 2 — headlights

The intensity of the instrument panel lighting can be continuously adjusted by turning the light switch knob in its pulled-out position.

8



1147310

The **dip lever and turn indicator lever** at the left of the steering column can be finger-tip operated with your left hand, while both hands are holding the steering wheel (Fig. 9). When the lever is set to main beam (upper position) a blue warning lamp in the combination instrument is illuminated. To **flash the headlights**, pull the lever towards the steering wheel. If the ignition key is turned to "o" or "Halt" while the headlights are on, the headlights will be switched off and only the parking lights will stay on.

9



1147311

The **turn indicator lever** beneath the steering wheel on the right-hand side of the steering column operates the right or left flashing indicators when moved up and down respectively, Fig. 10

A regular ticking sound and illumination of the green warning light in the combination instrument tells you that the flasher unit is operating correctly (Fig. 11). The oil pressure telltale also serves as a turn indicator telltale for a trailer.

When the steering wheel is returned to the straight-ahead position the turn indicator is automatically cancelled, but if the turn was only slight it may be necessary to cancel the lever by hand.

If the flashing indicators are to be operated for a short period only (e.g. changing lanes, overtaking, starting) press the turn indicator lever only slightly from its original position in the direction desired, without letting it engage. As soon as you let it go it will return to its original position without the steering wheel being turned.

When the steering lock is engaged, the turn indicator lever is used instead to switch on the **parking lights** on the appropriate side of the car:

- Lever up — left front and rear
- Lever down — right front and rear

The **wiper and screenwasher lever** on the right hand side of the steering column has 3 positions, Fig. 10:

- Lever pushed down (0)
off
- Lever in middle (1)
wiper speed 1 (normal)
- Lever pushed up (2)
wiper speed 2 (fast)

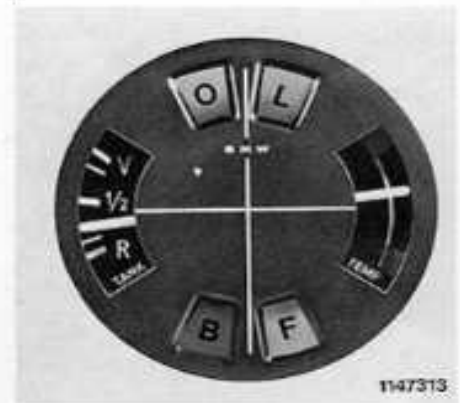
Use stage 2 (fast) only in heavy rain or snow.

10



1147312

11



1147313

12



1147314

If the wiper and screenwasher lever is pulled up towards the steering wheel rim, the automatic screenwasher will operate. The electric fluid pump and the wipers are both set in motion simultaneously. When the lever is released, a relay prevents the wipers from switching off immediately. Fig. 12

Warning: The automatic washer unit should not be operated when the fluid container is empty.

The two washer jets are located under the rear edge of the engine compartment lid in a position where they are not likely to be damaged. If either water jet fails to strike the glass correctly, the jet nozzle can easily be bent by hand to the correct position. Fig. 13

The fluid container (approx. 1.5 litres/2.6 Imp. pints/3.2 US pints) is located on the right-hand side of the engine compartment. Fig. 14

The forward-opening engine compartment lid is released from inside the car by pulling the lever close to the left side panel beneath the instrument panel. (Fig. 15) A built-in spring mechanism then assists in raising the lid from the outside.

Warning: Close the engine compartment only when the interior lever is in the rearward position. After closing, lock by pushing the lever forward.

13



1147315

14



1147316

15



1147317

Clock, trip mileage recorder, horns, warning lamp 13

A knurled knob in the centre of the electric clock should be pushed in and turned to adjust the hands (Fig. 16,1 — BMW 1602/1802/2002; Fig. 17,1 — BMW 2002 iii).

A reset knob is provided to return the trip mileage recorder in the speedometer to zero. The knob should be turned to the right, Fig. 16,2 — BMW 1602/1802/2002; Fig. 17,2 — BMW 2002 iii.

Operating the single-tone horn: horn pushes in the steering wheel spokes.

The red warning lamp on the instrument panel is illuminated if:

1. the fuel tank level drops to the reserve mark
2. the handbrake is pulled
3. the choke knob is pulled (does not apply to BMW 2002 Automatic and 2002 iii). Fig. 18

16



1147318

17



1147319

18



1147320

Fog lamps

By pulling the knob when the headlights are on, the fog lamps (optional) are switched on. Fig. 19

The hazard warning flashers can be operated with the ignition switched on or off by pressing in the knob at the left of the ashtray. The red knob is illuminated periodically to show that the hazard warning flashers are operating correctly. Fig. 20

Press the knob at the right of the ashtray to switch on the rear fog lamp (optional). When the lamp is switched on, the tailgate lamp in the green knob is illuminated. Fig. 21

The interior light switch has 3 positions:

- Position 1: permanently switched on;
- Position 2: permanently switched off;
- Position 3: light operates only when a door is opened (switches fitted to door pillars).

Fig. 22



Adjust the positions of both the interior and exterior rear view mirrors to suit your driving position.

The interior mirror — BMW 2002/A, 2002 ti — can be dipped by pressing the small lever at its base. Fig. 23

Each sun visor may be swung sideways to cover the side window if the sun is dazzling from that direction. Fig. 24

The combination instrument contains the fuel gauge, coolant thermometer and tailgate lamps for:

Oil pressure (O) red, also turn indicator for trailer
Battery charge (L) red
Turn indicators (B) green
Headlight main beam (F) blue
Fig. 24

The coolant thermometer is divided into 3 colour zones:

Blue: engine is running too cold. If the thermometer needle is in this region road speed and engine speed must be kept low.

White: normal operating temperature range.

Red: engine is too hot. No anxiety need be felt if the needle reaches the red

zone or enters it for a short period if the engine is working very hard or the outside temperature is extremely high. However, if the needle tends to remain in the red zone for longer periods, the engine is definitely in need of attention (see procedure described on p. 44).

When the ignition is switched on, the fuel level can be seen from the gauge. If the needle is indicating "Reserve" or if the red warning lamp on the instrument panel is illuminated fill up as soon as possible, although the tank still contains enough fuel for about another 30 miles, depending on how you drive.

The fuel filler cap is located on the right side of the car at the rear.

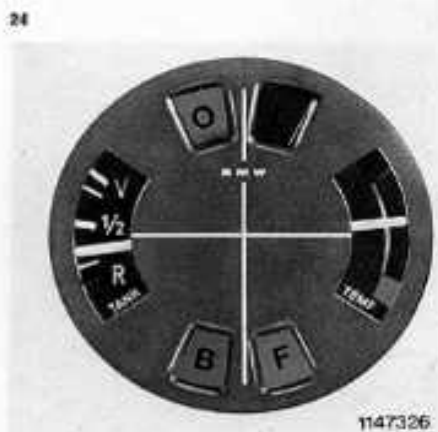
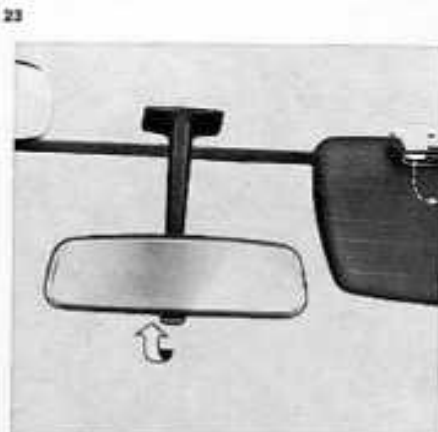
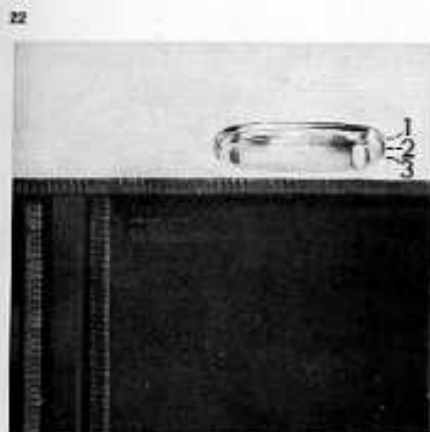


Fig. 25 shows the layout of the rear light cluster:

1. Turn indicator light (yellow)
2. Rear light and reflector (red)
3. Stop light (red)
4. Reversing light (white)

When the headlight switch is on (page 10, Fig. 8), the luggage compartment lighting is also switched on.

For fore-and-aft adjustment of the front seats, pull up lever at the outside edge of the seat base and slide the seat to the desired position. Release the lever and move the seat very slightly to ensure that the locking catch has engaged. Fig. 26,1

The front seat backrests are adjustable for rake by lifting the lever (Fig. 26,2) on the outside seat hinge fitting and leaning back against slight spring pressure until the desired angle is reached or allowing the backrest to spring forward automatically. On releasing the lever the seat engages at the point. The seat backs also have a locking mechanism to prevent accidental tipping forward. To release, pull up the knob (Fig. 26,3) on the outer edge of the seat back.

The height of both the headrests (optional extras) can be altered by either pushing down or pulling up. Make sure that the headrests are not distorted and that the locking catch has engaged. In the interest of safety the headrests should be on the level of the head and on no account behind the neck. Fig. 27

Inertia-reel seat belts can be fitted (optional) on the front seats to replace the standard static lap/diagonal belts. The two outer rear seats can also be fitted (optional) with a static or automatic seat belt.

25



26



27



Your BMW Service department knows the anchorage points and will gladly fit your car with seat belts if requested.

Seat belts can only protect yourself and your passengers if worn at all times even during town driving.

Children should always sit in the rear seats and wear either a lap belt, special belt or harness according to age and size.

In the interests of your own and your passengers' safety you should note the following:

The practical design of the seat belt facilitates wear. Fit the belt across the chest and over the hips. Pull the tongue to check whether the locking mechanism has engaged. Ensure that the belt is not

twisted. Fig. 28

It is of particular importance that the length of the belt is correct to ensure full effectivity.

The lap belt must fit snugly and should be adjusting on inertia-reel belts by using the diagonal belt.

If it is necessary to shorten the length of the static version, hold the sliding adjuster in one hand and pull the webbing until the desired length is obtained. Fig. 29

If the belt is to be lengthened tilt the sliding adjuster upwards. Fig. 30,1 and pull away from the body. Fig. 30,2.

The diagonal belt should also fit snugly so that a hand can be passed between the belt and the chest. Inertia-reel belts

are self-adjusting in length. To release the belt press the push-button in the centre of the lock. Fig. 28

To prevent the belts from being soiled or damaged and to prevent them from obstructing entry and exit the buckle should be snapped into the holder clip at the upper anchorage point.

If the seat belts are damaged have them replaced together with their fittings in the interests of your own safety.

From time to time you should have the lock parts, the retract mechanism on inertia-reel belts, the fittings and the webbing examined by your BMW customer service department.

Tips about the care and maintenance of your seat belts are given on page 40.

28



29



30

